



# ACCREU *Insights*

Biannual Newsletter | Issue 2 - November 2024



Welcome to the 2<sup>nd</sup> issue of the ACCREU *Insights*! Here you will find updates on the project activities, events and webinars, publications and more - twice a year!

Don't forget to follow ACCREU on [X](#) and [LinkedIn](#) to keep yourself up-to-date with all the latest news!

Feel free to forward this newsletter to any of your contacts who you think could be interested in knowing more about ACCREU. They can easily [SUBSCRIBE HERE!](#)

## Project's latest news

### ACCREU develops a new approach for wildfire risks assessment

The number and intensity of the most extreme wildfires on Earth have doubled over the past 20 years. In ACCREU, the Technical University of Denmark (DTU) together with partners from the International Institute for Applied Systems Analysis (IIASA) are developing a new and fully probabilistic approach for assessing wildfire risks under different climatic, land use and adaptation scenarios.

Read more [here](#)

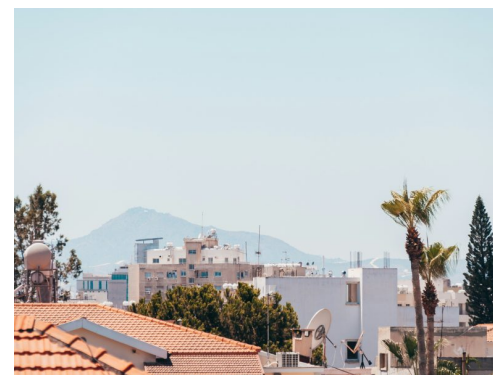


---

### Climate policy is good social and economic policy: new policy brief by the Cyprus Institute

ACCREU partner Cyprus Institute recently published a new paper in its [Policy Brief](#) series, entitled "[Climate Policy is Good Economic and Social Policy](#)". In this Brief, Cyl Professor Theodoros Zachariadis reports on the recent findings of scientific studies on the economic impacts of climate change. The most recent studies estimate much more adverse impacts of climate change on the economy than earlier analyses and estimate that Cyprus will be among the European countries with the heaviest negative welfare impact on vulnerable households.

Read more [here](#)

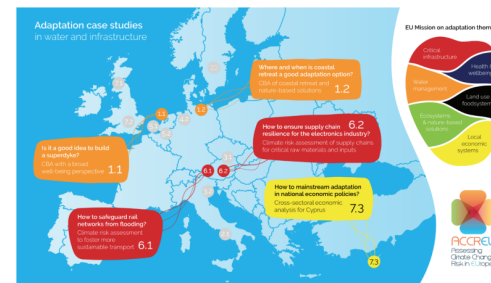


---

Policy-first approach to assess climate adaptation in ACCREU's European case studies

ACCREU offers a novel policy-first approach to assess climate adaptation in 15 co-creation case studies, of which five are highlighted on the map. Initial analyses have already taken place, and strong connections with case study stakeholders have been established thereby generating a concrete list of policy questions to address. Some of the policy issues ACCREU addresses are the roles of financial institutions and supervisors in adaptation to extreme flooding, the likely costs of adaptation at national level, and how adaptation to extreme heat can take place in a socially just way. All case studies are closely aligned to the European Union's Mission on Adaptation themes.

Read more [here](#)



## Events & webinars

### ACCREU's project meeting in Bilbao: advancing climate resilience strategies for Europe

The second annual meeting of the ACCREU project, organised by BC3, took place in Bilbao on 16-17 October. The event brought together research partners to discuss the next steps in addressing climate change risks across Europe. The hybrid meeting was attended by approximately 35 participants from 15 partner organisations within the ACCREU consortium. The event provided an opportunity for members to review key project milestones and coordinate plans for 2025.

Read more [here](#)



## Publications

### Heat stress and the labour force

Heat stress affects the health of workers through physiological and behavioural responses, in turn, affecting the labour force through impacts on labour supply, labour productivity and labour capacity. In this Review, authors explore the extent to which heat stress affects the labour force and discuss the corresponding occupational health and economic impacts.

Read more [here](#)



---

## Catalyzing Finance and Policy Solutions – ACCREU team contributes to the Asia-Pacific Climate Report 2024

Several scientists from within the ACCREU project consortium contributed to the Asia-Pacific Climate Report, an initiative by the Asian Development Bank (ADB) which aims to help Asia and the Pacific tackle climate change through targeted policy reforms. This inaugural report provides a thorough analysis of the region's shifting climate landscape, addressing issues such as the rising frequency and intensity of heatwaves, alongside the increasing economic and social costs. It highlights the urgent need for adaptation strategies and stresses the importance of mobilizing resources to protect the region's most vulnerable communities.

Read more [here](#)



---

## Understanding inter-farm inequalities in extreme weather event impacts: insights from the Dutch agricultural sector

This new publication by Deltares and VU Amsterdam on the International Journal of Disaster Risk Reduction explored the main factors that influence the varying effects of past weather extremes on Dutch arable farms in order to better understand how to lessen the impact of extreme weather events (EWEs), which are becoming more frequent and severe, posing serious challenges to the agricultural sector. These weather extremes can lead to significant drops in crop yields and revenue for farmers.

Read the full paper [here](#)





## New ACCREU publication explores inequalities in global residential cooling energy use to 2050

A new joint study by CMCC, RFF-CMCC European Institute on Economics and the Environment and Boston University highlights the growing reliance on air conditioning (AC) as a response to rising global temperatures, but warns of unequal access and environmental costs. Researchers project that global AC adoption could rise from 27% of households today to 41% by mid-century, with a doubling in electricity consumption for residential cooling. This increase could result in up to 1,365 million tons of carbon dioxide emissions annually.

Read the full paper [here](#)



### Other relevant projects

#### SPARCCE

[SPARCCE](#) is a Horizon Europe project that is co-developing modelling tools with policymakers, scientists and civil society to support us all in making better decisions to reduce the risks and build resilience within the society and economy of Europe in the face of climate change. By engaging policymakers, public and private sector stakeholders, and scientific experts throughout the project, SPARCCE aims to deliver actionable insights and recommendations for policymakers at all levels, businesses, and the civil society based on state-of-the-art science. More information on the project can be found [here](#)



---

#### CROSS-EU

The [CROSS-EU](#) project is dedicated to enhancing socio-economic resilience in response to climate change. It will provide decision-makers with essential tools for navigating climate risks, helping investments, and implementing effective adaptation and mitigation strategies. Over a span of 3 years, this EU funded project will assess socio-economic risks, develop climate-sensitive frameworks, and deliver a ready-to-use Decision Support System (DSS) platform. This collaborative effort involves 15 partners from 9 countries, including partners from the UK, funded by UKRI. More information on the project can be found [here](#)



Subscribe to CROSS-EU yearly newsletter [here](#)!

---



Follow ACCREEU on social media!



Funded by the European Union. Views and opinions expressed are however those of the author(s) only and do not necessarily reflect those of the European Union. Neither the European Union nor the granting authority can be held responsible for them.

[Unsubscribe](#)

If you are no longer interested, you can unsubscribe instantly at the above link.

[www.accreu.eu](http://www.accreu.eu)